

Name: _____ Date: _____ Period: _____

PHYSIO | Epithelial Tissues | Review Worksheet

1. Define Tissue: _____

2. List the 4 major types of tissues:

a. _____

b. _____

c. _____

d. _____

3. What are the 5 general characteristics of Epithelial Tissue:

a. _____

b. _____

c. _____

d. _____

e. _____

4. Epithelial tissue can be classified by?

5. What is the function of glandular epithelium?

6. Draw the following basic Epithelial Tissue shapes:

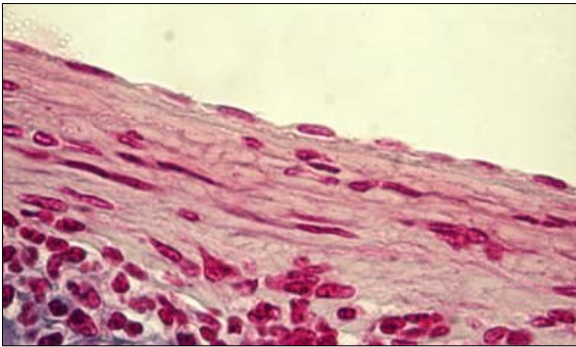
Squamous	Cuboidal	Columnar

Directions: Observe the photomicrographs of the different types of epithelial tissues.

Notice that the connective and epithelial tissues stain differently. Examine how the nuclei of each cell are stained darker than the cytoplasm of the cell. Locate the basement membrane.

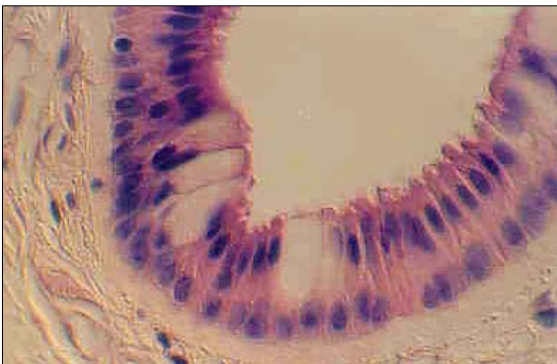
Notice both the apical and basal layers of each type of tissue.

7. Cell Type: _____



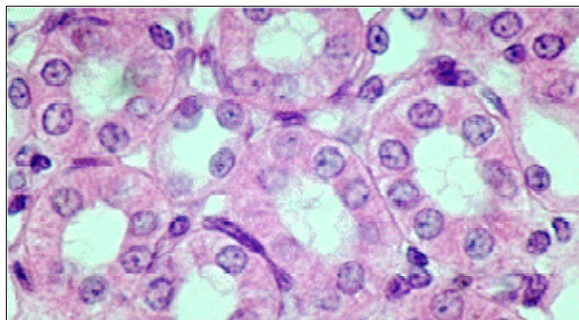
- Draw a line showing where the basement membrane begins.
- How many layers of cells are there? _____
- If there is more than 1 layer; is each layer the same shape? Explain.

8. Cell Type: _____



- Draw a line showing where the basement membrane begins.
- How many layers of cells are there? _____
- If there is more than 1 layer; is each layer the same shape? Explain.

9. Cell Type: _____



- Draw a line showing where the basement membrane begins.
- How many layers of cells are there? _____
- If there is more than 1 layer; is each layer the same shape? Explain.

10. Cell Type: _____



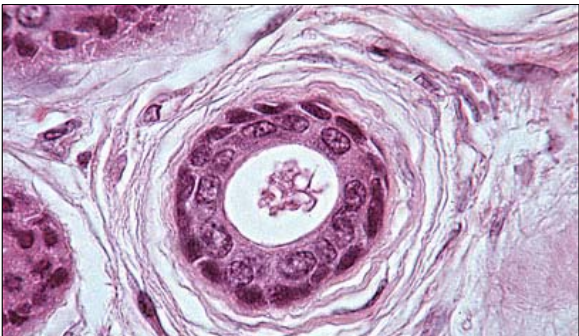
- a. Draw a line showing where the basement membrane begins.
 - b. How many layers of cells are there? _____
 - c. If there is more than 1 layer; is each layer the same shape? Explain.
-

11. Cell Type: _____



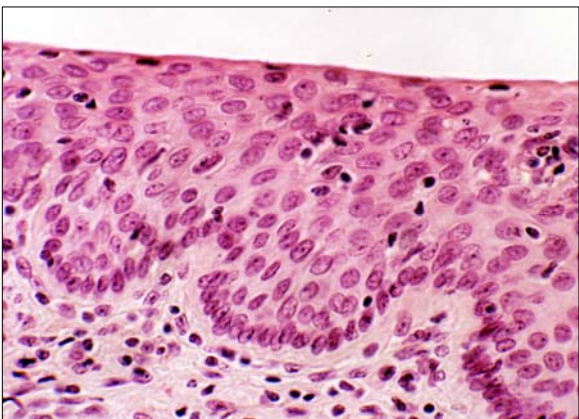
- a. Draw a line showing where the basement membrane begins.
 - b. How many layers of cells are there? _____
 - c. If there is more than 1 layer; is each layer the same shape? Explain.
-

12. Cell Type: _____



- a. Draw a line showing where the basement membrane begins.
 - b. How many layers of cells are there? _____
 - c. If there is more than 1 layer; is each layer the same shape? Explain.
-

13. Cell Type: _____



- a. Draw a line showing where the basement membrane begins.
 - b. How many layers of cells are there? _____
 - c. If there is more than 1 layer; is each layer the same shape? Explain.
-